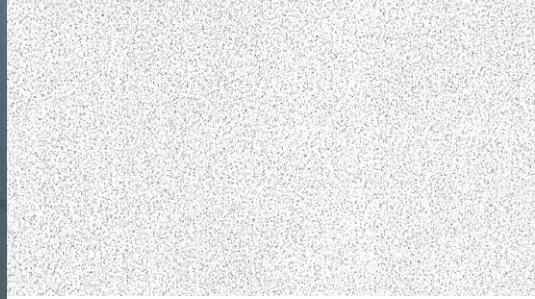


Mars™
 ClimaPlus™



Smooth textured panel



Features and Benefits

- Smooth, monolithic texture.
- High light reflectance (LR .90) is part of an "indirect lighting" solution.
- Excellent noise reduction with NRC of .70 meets general office acoustical needs for sound absorption.
- Durable, scratch-resistant, cleanable surface
- Low maintenance panels look like new for years to come.
- *CLIMAPLUS™* 30-year Lifetime System Warranty to withstand conditions up to 104 °F (40 °C)/ 95% relative humidity without visible sag when used with USG's *DONN®* Brand Suspension Systems.

Applications

- Corridors
- Department stores
- Executive offices
- Offices with indirect lighting
- Reception areas and lobbies
- General office spaces



MARS™ Panels with CLIMAPLUS™ Performance/DONN® Brand DX®/DXL™ Suspension System

Mars™ ClimaPlus™

Acoustical Ceilings



MARS™ CLIMAPLUS™
Panels

(SQ)	2' x2' x3/4"	Class A	86185	.70 	35	.90	White	A, B, C	72%	\$\$
	2' x4' x3/4"	Class A	88185	.70 	35	.90	White	A, B	72%	\$\$
(SLT)	2' x2' x3/4"	Class A	86785	.70 	35	.90	White	D	72%	\$\$
	2' x4' x3/4"	Class A	88785	.70 	35	.90	White	E	72%	\$\$
(FLB)	2' x2' x3/4"	Class A	86985	.70 	35	.90	White	F, G, H	72%	\$\$
	2' x4' x3/4"	Class A	88985	.70 	35	.90	White	F, G, H	72%	\$\$

Grid Profile Options

		C CENTRICITEE™		E DONN DX/DXL				

ASTM E1264 classification
Type IV, Form 1 or 2, Pattern G
ASTM E84 surface burning characteristics
Class A
Flame spread: 25
Smoke developed: 25
Weight
.96 lb./ft.²
Thermal resistance
R-2.6

Maximum backloading
See Warranty for details.
Maintenance
Can be cleaned easily with a soft brush or vacuum.
Scrubability³
Using the Gardner Scrubbability Test, 150 scrub cycles without surface break (ASTM D2486).
Surface scratch³
No visual damage by a metal shim of up to 20 mils using a surface scratch test.

Edge damage resistance³
Weight loss not to exceed 25-35% using the Friability Tests per ASTM C367.
Panel edge should withstand compression of a 1/4" blunt pin for at least 100 lbs. per square inch.
Water resistance³
Absorption of 1,660 gm/m² per Cobb test (T 441 om-84)

Footnotes
1. LR values are shown as averages.
2. For details, see the Recycled Content selector.
3. Independently verified performance test results available upon request.

SAFETY FIRST!
Follow good safety practices. Read material safety data sheets and related literature on products before specification and/or installation.