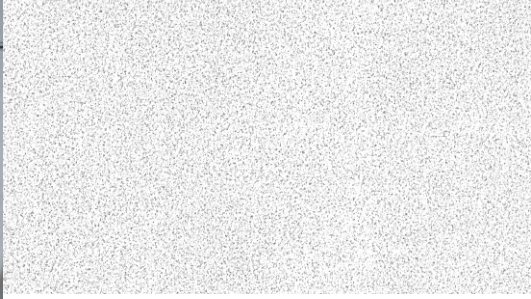


Halcyon™  
 ClimaPlus™



**Smooth textured panel**



**Features and Benefits**

- Smooth, monolithic texture.
- Light reflectance of LR .88 is part of an "indirect lighting" solution.
- Exceptional noise reduction with NRC values up to 1.00 to meet the demanding sound control needs of open-plan offices.
- Low-maintenance panels look new for years to come.
- *CLIMAPLUS™* 15-year Warranty to withstand conditions up to 104 °F (40 °C)/95% relative humidity without visible sag when used with USG's *DONN®* Brand Suspension Systems.
- Lightweight fiberglass basemat makes installation fast and easy.

**Applications**

- Offices with indirect lighting
- Open-plan offices
- Reception and lobby areas

# Halcyon™ ClimaPlus™

Acoustical Ceilings

Technical Service 800 USG.4YOU  
Web Site www.usg.com  
Samples/Literature 888 874.2450  
Samples/Literature Fax 888 874.2348  
Customer Service 800 950.3839  
Literature Number SC2365

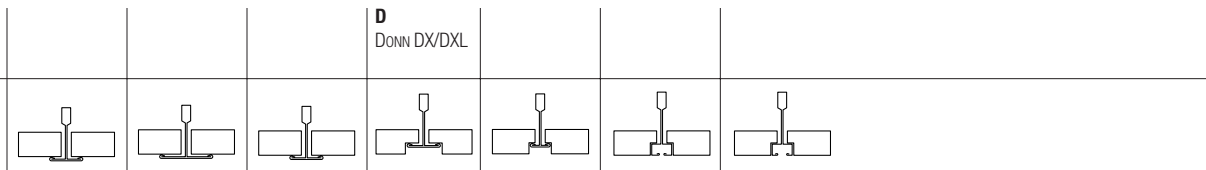


HALCYON™  
CLIMA PLUS™  
Panels



(SQ)	2' x2' x3/4"	Class A	97221	.90		20	.88	White	A, B, C	27%	\$\$
	2' x4' x3/4"	Class A	97241	.90		20	.88	White	A, B	27%	\$\$
	2' x2' x1"	Class A	98221	.95		20	.88	White	A, B, C	27%	\$\$
	30" x30" x1"	Class A	98331	.95		20	.88	White	A, B, C	27%	\$\$
	2' x2' x1"	Class A, Foil-Back	88221	.90		30	.88	White	A, B, C	27%	\$\$
	2' x4' x1"	Class A	98241	.95		20	.88	White	A, B	27%	\$\$
	2' x4' x1"	Class A, Foil-Back	88223	.90		30	.88	White	A, B	27%	\$\$
	4' x8' x1"	Class A	98481	.95		20	.88	White	A, B	27%	\$\$
	2' x4' x1-1/2"	Class A	99241	1.00		25	.88	White	A, B	27%	\$\$
	2' x4' x1-1/2"	Class A, Foil-Back	88224	.95		30	.88	White	A, B	27%	\$\$
	4' x4' x1"	Class A	98441	.95		20	.88	White	A, B	27%	\$\$
	2' x2' x1-1/2"	Class A	99221	1.00		25	.88	White	A, B, C	27%	\$\$
(SL)	2' x2' x1"	Class A	98223	.95		20	.88	White	D	27%	\$\$
	2' x2' x1"	Class A, Foil-Back	88225	.90		30	.88	White	D	27%	\$\$
	2' x4' x1"	Class A	98243	.95		20	.88	White	D	27%	\$\$
	30" x30" x1"	Class A	98333	.95		20	.88	White	D	27%	\$\$
	2' x4' x1"	Class A, Foil-Back	88226	.90		30	.88	White	D	27%	\$\$
	4' x4' x1"	Class A	98443	.95		20	.88	White	D	27%	\$\$
	2' x2' x1-1/2"	Class A	99223	1.00		25	.88	White	D	27%	\$\$
(FL)	2' x2' x1"	Class A	98225	.95		20	.88	White	E, F, G	27%	\$\$
	2' x4' x1"	Class A	98245	.95		20	.88	White	E, F, G	27%	\$\$
	30" x30" x1"	Class A	98335	.95		20	.88	White	E, F, G	27%	\$\$
	2' x2' x1"	Class A, Foil-Back	88227	.90		30	.88	White	E, F, G	27%	\$\$
	4' x4' x1"	Class A	98445	.95		20	.88	White	E, F, G	27%	\$\$
	2' x2' x1-1/2"	Class A	99225	1.00		25	.88	White	E, F, G	27%	\$\$

Grid Profile Options



**ASTM E1264 classification**  
Type XII, Form 2, Pattern G  
**ASTM E84 surface burning characteristics**  
Class A  
Flame spread: 25  
Smoke developed: 50

**Weight**  
0.38 lb./ft.<sup>2</sup> (3/4" panels)  
0.47 lb./ft.<sup>2</sup> (1" panels)  
0.68 lb./ft.<sup>2</sup> (1-1/2" panels)  
**Thermal resistance**  
R-3.3 (3/4" panels)  
R-4.4 (1" panels)  
R-6.6 (1-1/2" panels)

**Maximum backloading**  
See Warranty for details.  
**Maintenance**  
Can be cleaned easily with a soft brush or vacuum.

**Footnotes**  
1. Custom size panels available. Please contact your USG sales representative for details.  
2. LR values are shown as averages.  
3. For details, see the Recycled Content selector.

**SAFETY FIRST!**  
Follow good safety practices. Read material safety data sheets and related literature on products before specification and/or installation.