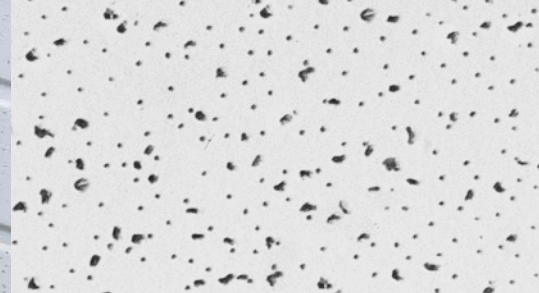


# Radars™ ClimaPlus™ Illusion



Medium textured panel



RADAR™ CLIMAPLUS Illusion Two/24 Panels/DONN® DX® Suspension



#### Features and Benefits

- Non-directional pattern with a fresh, clean appearance offers fast, efficient installation.
- Select items available in Standard Colors.
- Face scores create illusion of a smaller-scaled ceiling system without compromising accessibility.
- CLIMAPLUS™ 15-year System Warranty to withstand conditions up to 104 °F (40 °C)/90% relative humidity without visible sag when used with USG's DONN® Brand Suspension Systems.
- Optional FIRECODE™ formulation designed to meet life safety codes.
- Illusion Two/24 panel edges and center score painted for sharp, clean appearance.

#### Applications

- Corridors
- Offices
- Reception and lobby areas
- Retail stores

# Radars<sup>TM</sup> ClimaPlus<sup>TM</sup> Illusion

Acoustical Ceilings



UL Classified

	Edge	Panel Size	Class	Item No.	NRC	CAC Min.	LR <sup>1</sup>	Color <sup>2</sup>	Grid Options	Recycled Content <sup>3</sup>	Panel Cost
<b>RADAR<sup>TM</sup> CLIMAPLUS<sup>TM</sup> Illusion Two/24 Panels</b> The look of 2'x2' panels		2' x4' x3/4"	Class A	<b>2846</b>	.55	35	.82	White	A	50%	<b>\$\$</b>
	(ILT) <sup>5</sup> 	2' x4' x3/4"		<b>2844</b>	.55	35	.82	White	B	38%	<b>\$\$</b>
<b>RADAR CLIMAPLUS Illusion Four/48 Panels</b> The look of 48"x6" linear strips	(SLT) <sup>5</sup> 	2' x4' x3/4"	Class A	<b>2882</b>	.50	35	.82	White	A	38%	<b>\$\$</b>
	(ILT) <sup>5</sup> 	2' x4' x3/4"	Class A	<b>2884</b>	.50	35	.82	White	B	38%	<b>\$\$</b>
<b>RADAR CLIMAPLUS Illusion Eight/12 Panels</b> The look of 12"x12" tile	(SLT) <sup>4</sup> 	2' x4' x3/4"	Class A	<b>2852</b>	.55	35	.82	White	A	38%	<b>\$\$</b>
	(ILT) <sup>5</sup> 	2' x4' x3/4"	Class A	<b>2854</b>	.55	35	.82	White	B	38%	<b>\$\$</b>
<b>RADAR CLIMAPLUS Illusion Thirty-Two/6 Panels</b> The look of 6"x6" tile	(SLT) <sup>4</sup> 	2' x4' x3/4"	Class A	<b>2862</b>	.50	35	.82	White	A	38%	<b>\$\$</b>
	(ILT) <sup>5</sup> 	2' x4' x3/4"	Class A	<b>2864</b>	.50	35	.82	White	B	38%	<b>\$\$</b>
		<b>Illusion Two/24</b>		<b>Illusion Four/48</b>		<b>Illusion Eight/12</b>		<b>Illusion Thirty-Two/6</b>			
<b>Grid Profile Options</b>											

Illusion Two/24 panel edges and center score painted for sharp, clean appearance.

**ASTM E1264 classification**  
 Type III, Form 2, Pattern CDK  
**ASTM E84 surface burning characteristics**  
 Class A  
 Flame spread: 25  
 Smoke developed: 10

**Weight**  
 0.90-1.06 lb./ft.<sup>2</sup> (Class A)  
 1.41 lb./ft.<sup>2</sup> (FIRECODE)  
**Thermal resistance**  
 R-1.7 (Class A)  
 R-1.6 (FIRECODE)

**Maximum backloading**  
 See warranty for details.  
**Maintenance**  
 Can be cleaned easily with a soft brush or vacuum.

**Footnotes**  
 1. LR values are shown as averages.  
 2. See color selectors for more information.  
 3. For details, see the Recycled Content selector.  
 4. Panels have a 15/16" routing.  
 5. Panels have a 9/16" routing.

**SAFETY FIRST!**  
 Follow good safety practices. Read material safety data sheets and related literature on products before specification and/or installation.